



# PL370HD

## 70 TONS CLASS ELECTRICAL LOADER

Standard Reach:  
65 feet  
( Y or S booms)



Tanguay support: Experienced engineering people working with you during mill investment planning to optimize mill layout and loader configuration to maximize production. On-site operator and technician training including full documentations.

### SINGLE BASE

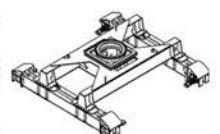
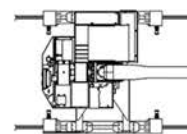
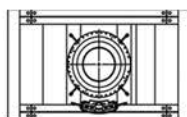
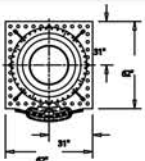
Mount on concrete base

### DOUBLE BASE

Mount over conveyer, road or rail

### RAIL

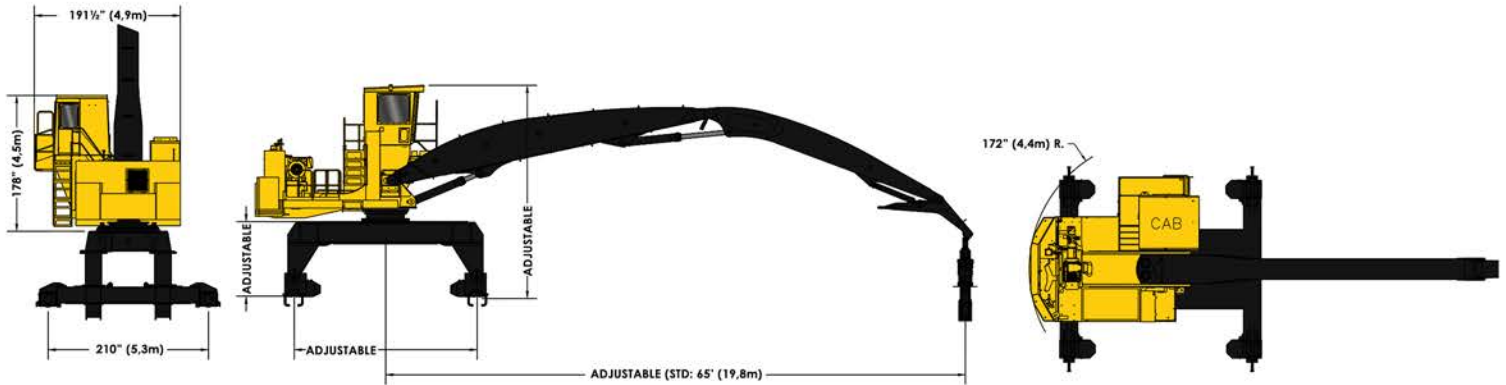
Trolley Mount



[www.tanguay.cc](http://www.tanguay.cc)

1.800.463.9856





Tanguay Machinery reserve the right to change specifications without notice or obligation. Product illustrations may be equipped with non-standard equipment.

## Power Supply

- Totally enclosed 200 HP (150 kW) fan cooled electric motor (TEF C), 1775 rpm, 3 phases, 60 cycles.
- Moisture resistant windings corrosion resistant epoxy finish.
- Power supply wiring package available for U.S. (440 V) and Canadian (575 V) electric services.
- Heavy-duty and weatherproof electric controls panel including heavy-duty transformer, fuses and wiring.
- Transformer supplies: 240 V for cab heater, 120 V for hydraulic oil heater and 24 V for lights, windshield wiper, etc.

## Hydraulics

- Two (2) variable displacement piston pumps.
- Total flow of 220 gpm (830 L/min).
- Operating pressure: 4000 psi (27580 kPa).
- Oversized hydraulic oil cooler with reversible fan.
- One (1) full flow return and 1 case drain line filter with restriction indicators (5 micron).
- Oil tank immersion heater, 120 V.
- Hydraulic system test points.
- Hydraulic tank oil level gauge.
- Electro proportional joystick

## Work Station

- Large 72" x 60" rear entry cab engineered for the safety and comfort of the operator.
- Mill Operator Station: Plenty of room for additional monitors and controls
- Handrails and stairs provide easy cab access.
- Visibility is excellent due to the height of the cab and ample windshield area.
- Cab with A/C and heater, front protective screen, side windows, side escape window, wiper and Am-Fm-Bluetooth radio
- Complete instrument panel including MD4 control display with hydraulic oil temperature, low hydraulic oil level alarms, starter switch, dome light and working light switches.
- Electro proportional joystick controls with IQAN control system for smooth and fast boom and grapple functions and possibility to limit working zones to protect sensitive areas.

## Swing

- Rotation on a 55 in. (1397 mm) turntable bearing with internal gear and two planetaries.

## Options

- Hydraulic refill pump
- Vacuum pump
- Auto Lube system
- Customized access catwalk depending on the application

## Booms

- Lift capacity : 31 250 lbs (14 200 kg) @ 30 feet (9,14m) ; 14 000 lbs (6350 kg) @ 55 feet (16.75m)
- Boom designed to suit your mill application from chips to long logs.
- Also available for scrap yard or general material handling.

