



WL350

WHEEL LOG
LOADER

WL350 Standard Features:

- Reach to 43 ft./13.1 m
- Lift capacity of 18,000 lbs @ 30ft (8 200 kg @ 9 m)
- Full lift capacity over 360°
- 220 HP (164 kW) Electronic turbo diesel engine
- Four wheel drive with 6-speed Powershift transmission
- Tractive effort : 43 000 lbs (13 600 kg)
Drawbar pull : 100,000 lbs (45 360 kg)
- Large 185 gallon US (700 L) fuel tank for extended shifts
- Four heavy duty hydraulically actuated stabilizers
- Forestry designed booms and sticks for handling all types of wood
- Operator's cab engineered for safety and comfort with electro-proportional control for hydraulic height adjustment.



The Tanguay, Personalized Approach:

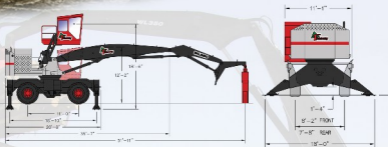
TG products are designed from the ground up with high quality components for exceptional reliability and superior performance over the long term. We listen and provide customized fully engineered products to suit your logging business. A solid investment in any language!!!

www.tanguay.cc

Specifications

WHEEL LOG LOADER

WL350



Engine:	Commins QSB-6.7 L Tier III Turbo 4 stroke-cycle, 220 HP (164 kW) net @ 2100 RPM.
Base machine weight:	Approx. 74 000 lbs (33 566 kg) w/o attachment in S-43 configuration.
Cooling:	Side by side three (3) sections HD type (Air to air, engine coolant & hydraulics).
Fuel tank:	185 gals US / 700 L.
Undercarriage:	Four wheel drive carrier with front steering axle, Powershift transmission with six (6) speeds forward and three (3) reverse, four 20.5 X 25 tires. Multiple disk service brake and automatic parking and safety brakes. Tow hook and four (4) hydraulic stabilizers.
Hydraulic system:	State of the art load sensing hydraulic system with two (2) variable displacement piston pumps and one (1) double gear pump. Total flow of 158 GPM @ 3900 psi. Thermostatic valve to control hydraulic oil temp in cold weather starts.
Electrical system:	24V system, 70 amp. Alternator, 110V hydraulic oil heater, AM-FM radio with CD player and 24V / 12V converter, main disconnect switch. Seven (7) work lights.
Swing:	Continuous rotation. 55° tumbler bearing with internal gear powered by hydraulic piston rotor mounted on planetary reducer.
Cab :	Fully insulated 52" X 90" rear entry cab with electro-proportional control for smooth and fast height adjustment, safety glass windows, left side escape window, air conditioning, defroster, pressurizer, dome light, windshield wiper and washer, mechanical suspension seat with adjustable arm rests, hydraulic joystick controls and seat belt. Complete instrument panel including tachometer and fuel gauge.
Optional equipment:	Choice of boom configuration (live heel tree length, short wood or butt & top) and grapple to suit your application. Quick-attach for faster grapple switch, Fire protection system, Automatic lube system, 23.5 X 25 tires, Spare rim, Towing package, Feeders.

Note: Specifications subject to change without notice.



www.tanguay.cc