

Trans-Gesco

TG88C

Shortwood Forwarder

By far **THE MOST PRODUCTIVE** forwarder in the industry

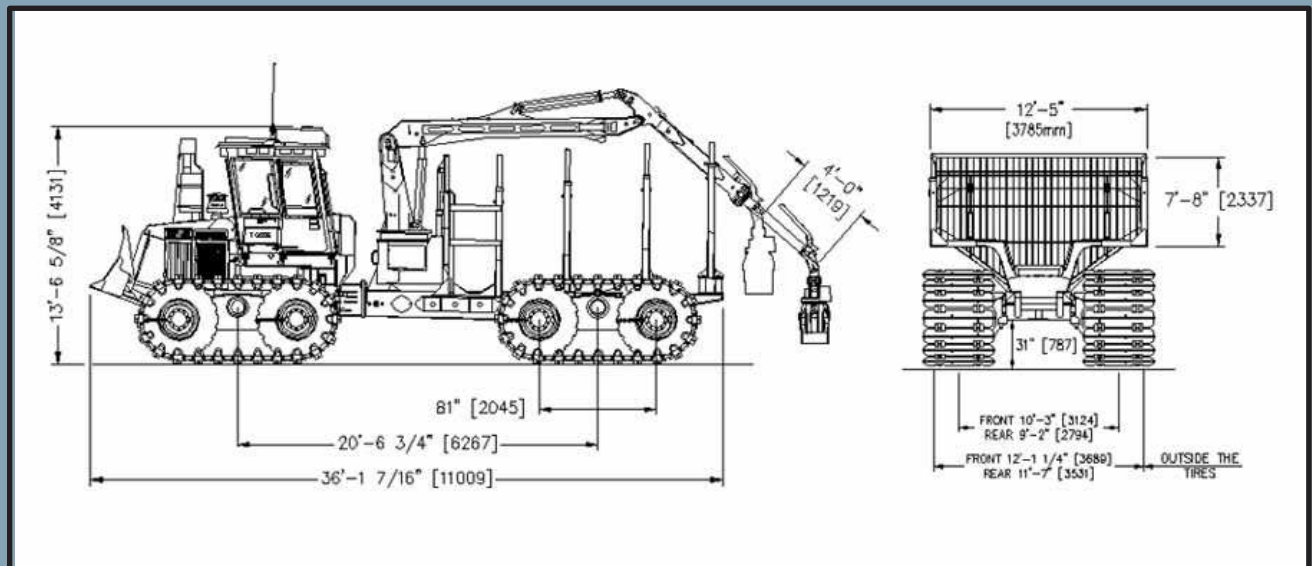
- Large 25 tons (22 680 kg) payload capacity
- 160,000 lbs (712 kN) draw bar pull
- Powerful and fast loader with a lift capacity of 5,500 lbs @ 20 ft (2 495 kg. @ 6.1 m) and 26 feet (7.9 m) maximum reach
- Versatile log bunk designed to maximized payload for various log lengths up to 35 feet
- Electronic horse power control and reduced engine rpm during loading cycle for fuel savings

100 % HYDROSTATIC Drive System

- Each wheel is equipped with a wheel-motor to eliminate all gear problems related to mechanical drive systems
- Hydrostatic brakes on each wheel provide excellent braking ability in the worst conditions.

HIGH PERFORMANCE on any type of terrain

- Stability on steep slopes ; 12.4 ft (3.79 m) overall width
- Low ground pressure on soft and sensitive grounds ; 8,12 PSI on the 48" tracks of the back tandem with a full 25 ton payload
- Effective on deep snow and tough ground ; 30 inch (76 cm) ground clearance and 120 000 lbs draw bar pull
- Designed for maximum life and minimum maintenance ; frame built with 100% high tensile steel
- Easy access to components ; full tilting cab



Trans-Gesco

www.transgesco.com
info@transgesco.com

1 800-472-3527

Note : Trans-Gesco reserves the right to change specifications without notice.

Trans-Gesco

TG88C

Shortwood Forwarder

DIESEL ENGINE

- Cummins M11, Aftercooled
- Power : 350 hp (261 kw) @ 2100 rpm
- Torque : 875 ft-lb (1181 N-m) @ 2100 rpm
- Displacement : 661 in3 (10,8 litres)
- Fuel tank capacity: 291 USgal (1 100 liters)

OPERATING WEIGHT

- Approximate weight : 66 000 lbs (29 940 kg) without tracks

HYDROSTATIC DRIVE SYSTEMS

- Draw bar pull : 160 000 lbs (716 kN)
- Eight 80 cc variable displacement drive motors mounted on a planetary gear reduction
- Four 75 gpm (284 l/min) variable displacement drive pumps
- In-board computer controlling traction and steering. Also dual horsepower limiter adjusting driving speed to available horsepower
- Operating pressure : 6000 psi (413 bar)
- Hydrostatic brakes and spring applied parking brake on each wheel
- Tandem oscillation : +/- 19°
- Steering : +/- 35°
- Travel speeds :
Low : 0-2,2 mph (0 - 3,5 km/h)
High : 0 -4,4 mph (0 - 7,1 km/h)

TIRES

- Eight 17,5 X 25, 20 ply with Trans-Gesco traction grooving
- Optional R.L. tire inserts or Permafill filling

HYDRAULIC SYSTEM

- Two 42 gpm (160 l/min) implement pumps with load sensing valves to run loader, grapple, telescopic back stop, steering and dozer blade
- Operating pressure : 3,500 psi (241 bar)
- Two main hydraulic tanks combined for a total capacity of 108 USgal (410 l)
- One 13,2 USgal (50 l) refill tank. An electrical pump transfers the filtered oil to the main tanks.
- Full flow return line filters, immersion type with easy to replace cartridges
- ORS fittings all around

ELECTRICAL SYSTEM

- 24 V DC, dual batteries
- 100 A alternator
- Electronic warning system for all critical engine and hydraulic functions.
- (20) 75 W halogen lights

LOADER

- Trans-Gesco knuckle-boom loader
- Capacity: 6 300 lb @ 20 ft (2 860 kg @ 6,1 m)
- Swing torque: 35 170 ft-lbs (46,1 kN-m)
- Maximum reach: 26 ft (7,9 m) with telescopic extension
- Choice of continuous rotation grapples to match your application

LOG BASKET

- Maximum load capacity: 50,000 lbs (22 700 kg)
- 67 square feet (6,22 m2) low profile wood basket for maximum stability
- Sturdy Back Stop with a telescopic gate for easier loading
- Bolt-on quick attached tail

maximize payload for various log lengths up to 35 feet (10 m)

CAB AND CONTROLS

- Hydraulically tiltable cab for easy access (Electrical pump)
- Lexan windows
- Front and rear windshield wipers
- Front and rear defrost fans
- Air conditioning and heating system
- Comfortable swivel mount chair with armrests and fore/aft/height adjustments
- Electro-proportional joystick controls. (No oil in cab compartment)
- Safety seat belt
- Three large built-in tool boxes
- Complete instrumentation panel
- ROPS /FOPS/OPS certified structure
- Sound level under 80 dBA

OPTIONS

- Choice of single grouser tracks shoes from 28 to 54 inches wide (0,7 to 1,4 m) standard or "Banana" style
- Dozer Blade
- Fire suppression system
- Proheat system
- Quadco Snubber

Trans-Gesco

www.transgesco.com
info@transgesco.com

1 800-472-3527

Note : Trans-Gesco reserves the right to change specifications without notice.