



FELLER BUNCHERS

900
SERIES

The 900 Series Features:

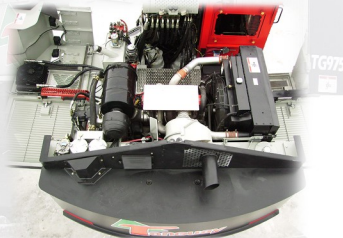
- Powerful 330 hp Cummins QSL9 engine and low fuel consumption.
- Highly efficient IQAN control system.
- Oversized cooling package and optional tropical cooling package designed for high ambient temperature environment.
- Electro-proportional controls (No oil in the cab).
- Impressive 295 gpm of hydraulic flow and two dedicated closed loop traction pumps for superior performance.
- Gull wing enclosures for easy servicing.

Two models of 900 Series feller bunchers:

The TG970 is the flat bottom model (no-tilt) with Tanguay custom design D7 bolt-on type track frame providing over 85 000 lb of drawbar pull.

The TG975 is the leveling cab version providing 45% front, 8% rear and 30% side tilt for efficient steep slope harvesting.

Both models are available with the heavier duty D7G size bolt-on track frame, tractor type rollers and huge F100 size final drive.



The Tanguay Personalized Approach:

TG products are designed from the ground up with high quality components for exceptional reliability and superior performance over the long term. We listen and provide customized fully engineered products to suit your logging business. A solid investment in any language!!!



www.tanguay.cc

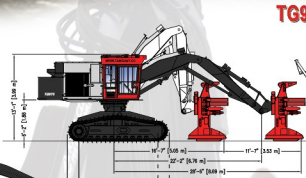
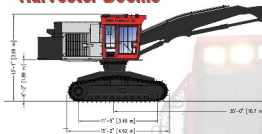
Specifications

FELLER BUNCHERS

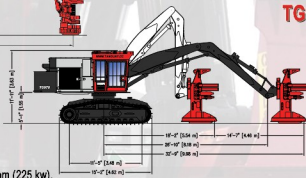
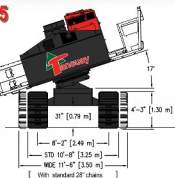
900

SERIES

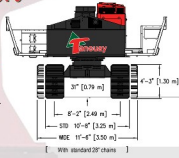
Harvester Booms



TG975



TG970



Engine:	Cummins QSL9, 330 hp @ 1800 rpm (225 kw).
Base machine weight:	Approx. 77 000 lbs (35 000 kg) w/o attachment.
Cooling:	Oversize cooling system designed to perform under Tropical environment.
Fuel tank:	Two (2) fuel tanks for a total of 465 US Gal (1750 l). Optional larger reservoir for a total of 675 US Gal (2550 l).
Undercarriage:	Custom built D7 size undercarriage with two (2) speeds drive motors on a closed loop hydraulic circuit and dedicated drive pumps providing over 85 000 lbs of traction. Optional D7G size undercarriage with tractor-type double flange rollers and oversized recoil springs for heavy duty applications. Top & bottom replaceable bolt-on wear plates.
Hydraulic system:	IQAN full control system with choice of four (4) operator settings. Five pumps with a total flow of 295 gpm (1115 l/min). Closed loop hydraulics for traction. Pressurized 180 US Gal (680 l) main hydraulic tank and 23 US Gal (87 l) refill tank.
Electrical system:	24 volts system, 100A alternator, (11) halogen working lights plus two (2) service lights. Two (2) electrical engine heaters and two hydraulic tank heaters for cold start-up.
Boom options:	Parallel motion feller buncher booms with standard 28'-6" reach (32'-8" optional) or parallel motion harvester booms with 35' reach (10,6 m).
Swing:	Two (2) swing motors mounted on planetary gear boxes, 360° continuous rotation, 72 000 ft-lb (98 kN-m) of torque and a 7,3 rpm swing speed.
Leveling System:	2 cylinders/4-way cab levelling. Front 45%, side 30%, rear 8%.
Tail Swing:	64" (1,62 m) with std 28" track shoes (mounted wide).
Cab :	Ergonomic and fully adjustable suspension seat with electro-proportional joysticks (no oil in the cab). Air conditioned and pressurized cab with roof and floor heaters. Complete instrument panels. Lexan windows throughout and 1 1/4" thick front window for 360° rotation high speed saw. Designed to meet ROPS/FOPS/OPS.
	Note: Specifications subject to change without notice.



www.tanguay.cc